

20 Brayton Avenue, Didsbury Park, Manchester, M20 5LP



JP & Brimelow
ESTATE AGENTS



 4  2  2  D

VIDEO TOUR AVAILABLE A truly stunning and traditional, FOUR BEDROOM, semi-detached property. This charming, period home is located on the quiet and leafy Brayton Avenue here in Didsbury Park.

Situated in a fantastic location with transport links, an array of amenities, bars and restaurants all close by, a short walk to both Didsbury Park and Fletcher Moss, and with both primary and secondary schools just a short distance away.

In brief this attractive, bay fronted property consists of; a welcoming entrance hall, a downstairs W.C, a family room to the front aspect, an impressive sized lounge with views and access out into the spectacular SOUTH FACING garden, a fitted contemporary kitchen,/ breakfast room which also has views and access out into the rear garden along with access into the good sized garage.

Stairs leading to the first-floor landing reveal three good sized double bedrooms, one benefitting from a SOUTH facing balcony, an additional bedroom, and a white three-piece bathroom suite completes this delightful property.

Other benefits include gas fired central heating, high ceilings, a driveway providing off road parking, a garage, a workshop and a sizable rear enclosed garden.

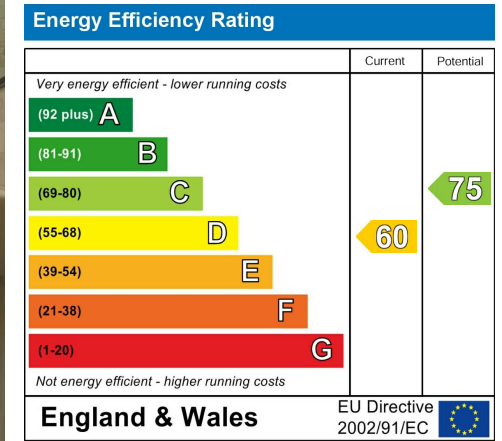
OFFERED WITH NO VENDOR CHAIN.

£750,000



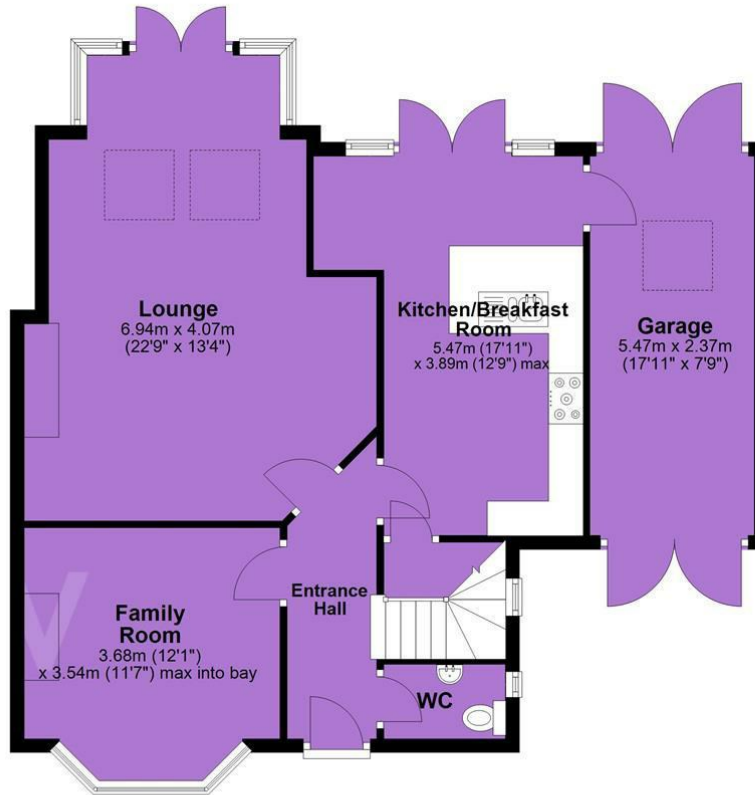


EPC Chart

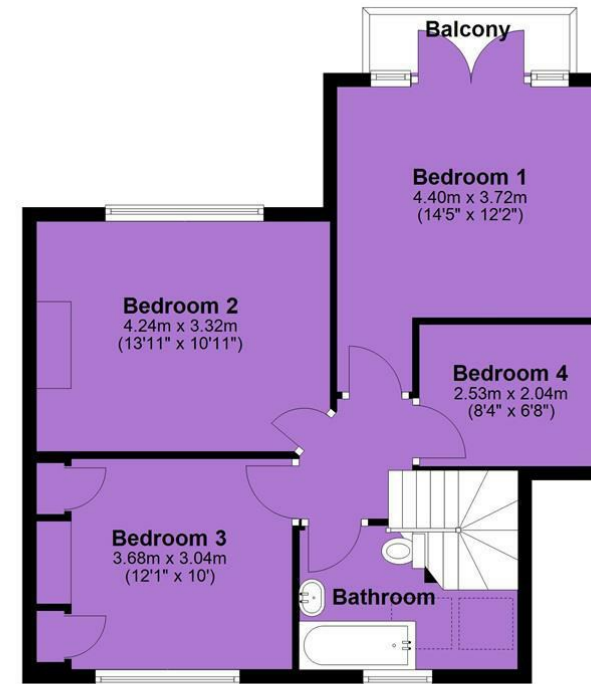


Tenure: Freehold Council Tax Band: D

Ground Floor



First Floor



JP & Brimelow Estate Agents Ltd
430 Barlow Moor Road, Manchester, M21 8AD
Tel: 0161 8822233
E: sales@jpbrimelow.co.uk www.jpandbrimelow.co.uk



JP & Brimelow
ESTATE AGENTS

NOTICE: JP & Brimelow Estate Agents Ltd for themselves and for the vendors or lessors of this property whose agents they are give notice that:

- (i) the particulars are set out as a general outline only for the guidance of intending purchasers or lessees, and do not constitute, nor constitute part of, an offer or contract;
- (ii) all descriptions, dimensions, references to the condition and necessary permissions for use and occupation, and other details are given in good faith and are believed to be correct but any intending purchasers or tenants should not rely on them as statements or representations of fact but must satisfy themselves by inspection or otherwise as to the correctness of each of them;
- (iii) no person in the employment of JP & Brimelow Estate Agents Ltd has any authority to make or give any representation or warranty whatever in relation to this property.

jpandbrimelowestateagents

@jpandbrimelow

